

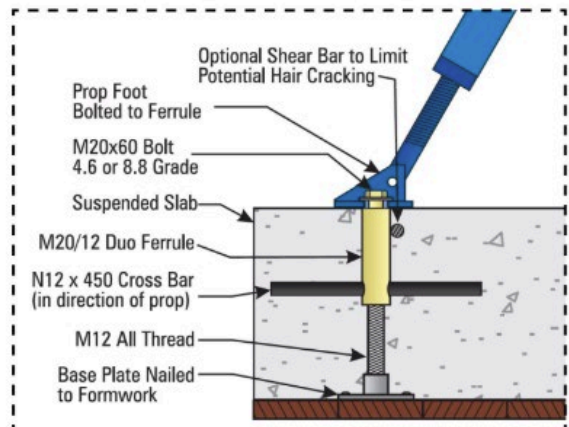
Technical Data Sheet

Early Propping Support



- Steel Base (HDG)
- Plastic Base - High
- Plastic Base - Low

- Adjustable height - Suits all floor thickness



The Actech Early Propping Supports Provide a safe and cost effective way to prop panels in low strength concrete floors. Simply locate the correct propping position and secure the base to the formwork soffit. Cut M12 all thread to suit the finished height of the support.

Part Number	Description	Pack (pc)
50962012.DEF.ZR	M20-M12 x 96 DEF Round Ferrule - Zinc	50
50962012.DEF.GR	M20-M12 x 96 DEF Round Ferrule - Gal	50
50962012.BASE.G	M20-M12 x 96 DEF Base - Gal	50
49SCRM12.HI	Plastic Chair with M12 Thread - High	50
49SCRM12.LO	Plastic Chair with M12 Thread - Low	50

Load Rating of EPS

Concrete Strength	8 MPA	10 MPA	15 MPA	20 MPA	25 MPA	30 MPA	40 MPA
Tension	34.38 kN	38.44 kN	47.08 kN	48.00 kN**	48.00 kN**	48.00 kN**	48.00 kN**
Max Prop Load	39.70 kN	44.44 kN	54.63 kN	55.40 kN**	55.40 kN**	55.40 kN**	55.40 kN**
Max Prop Shear	19.85 kN	22.20 kN	27.18 kN	27.70 kN**	27.70 kN**	27.70 kN**	27.70 kN**

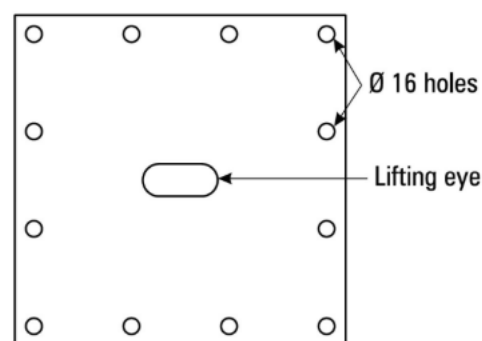
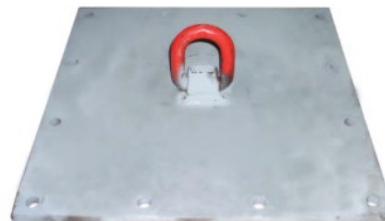
* Next Day Propping' is subject to concrete achieving minimum strength in table above

* The pull out capacity is limited by the capacity of ferrule. WLL calculations based on FOS = 2.5

Technical Data Sheet

Bugger Plate - 5T Capacity

- Create a new lifting point
- Available for hire
- Certification and tech supplied
- Code: 5P52-BUG.5T
- Size: 500 x 500 X 16 Plate
- 12 No 16mm holes @100mm centres



Pry Bar

- Bar for placing tilt panels during lift



- 5PRYBAR

Technical Information: The technical information, guidance, and other statements contained in this document or otherwise provided by Actech are based upon records, tests, or experience that Actech believes to be reliable, but the accuracy, completeness, and representative nature of such information is not guaranteed. Such information is intended for people with knowledge and technical skills sufficient to assess and apply their own informed judgment to the information. No license under any Actech or third party intellectual property rights is granted or implied with this information. Product Selection and Use: Many factors beyond Actech's control and uniquely within user's knowledge and control can affect the use and performance of an Actech product in a particular application. As a result, customer is solely responsible for evaluating the product and determining whether it is appropriate and suitable for customer's application, including conducting a workplace hazard assessment and reviewing all applicable regulations and standards (e.g., AS, Work Safe etc.). Failure to properly evaluate, select, and use an Actech product and appropriate safety products, or to meet all applicable safety regulations, may result in injury, sickness, death, and/or harm to property. Warranty, Limited Remedy, and Disclaimer: Unless a different warranty is specifically stated on the applicable Actech product packaging or product literature (in which case such warranty governs), Actech warrants that each Actech product meets the applicable Actech product specification at the time Actech ships the product. Actech MAKES NO OTHER WARRANTIES OR CONDITIONS, EXPRESS OR IMPLIED, INCLUDING, BUT NOT LIMITED TO, ANY IMPLIED WARRANTY OR CONDITION OF MERCHANTABILITY, FITNESS FOR A PARTICULAR PURPOSE, OR ARISING OUT OF A COURSE OF DEALING, CUSTOM, OR USAGE OF TRADE. If an Actech product does not conform to this warranty, then the sole and exclusive remedy is, at Actech's option, replacement of the Actech product or refund of the purchase price. Limitation of Liability: Except for the limited remedy stated above, and except to the extent prohibited by law, Actech will not be liable for any loss or damage arising from or related to the Actech product, whether direct, indirect, special, incidental, or consequential (including, but not limited to, lost profits or business opportunity), regardless of the legal or equitable theory asserted, including, but not limited to, warranty, contract, negligence, or strict liability.